

Check Valves

Stainless Steel - Swing Disc

Type CSW150SSMIR Wafer Swing Check Valve

ANSI 150 Class



The **Wafer Swing Check Valve** incorporates several features distinguishing it from conventional check valves for silent, fast, non slam operation. The most prominent of these is the accurately machined disc and its special quick closing action. Spring loading of the 316SS disc assures instantaneous closure to reversing flow, preventing build-up of momentum, the cause of damaging water hammer. The hinge pin design assures free movement of the disc and eliminates seizure under extreme conditions. Metal seat is standard for sealing. Lifting eye hook on 8" to 12" valves.

Operating Pressures and Temperatures

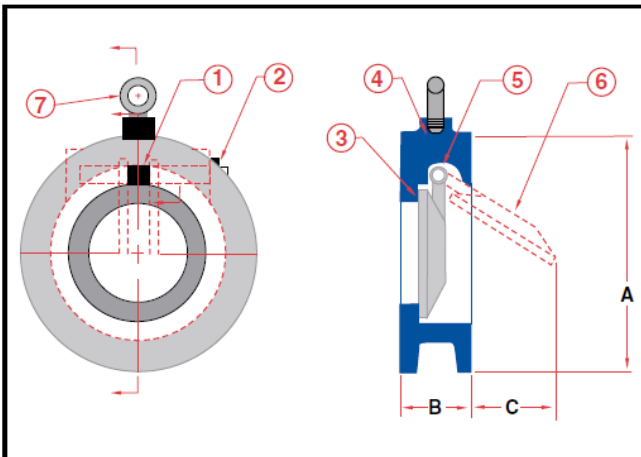
Service	Size	psi	Temp
WOG	2" - 12"	275	100°F

Construction

No	Name	Material
1	Torsion Spring	316 SS
2	Bolt	316 SS
3	Seat	CF8M
4	Cast Body	CF8M
5	Shaft	316 SS
6	Disc	CF8M
7	Eye Bolt	Carbon Steel Zinc Plated

Dimensional Data

Size Inches	Model	A	B	C	Shipping Weight (lbs)
2	0200CSW150SS	4 1/8	2 3/8	1 1/8	8
3	0300CSW150SS	5 3/8	2 7/8	1 1/2	16
4	0400CSW150SS	6 7/8	2 7/8	2 3/8	26
6	0600CSW150SS	8 3/4	3 7/8	3 3/4	55
8	0800CSW150SS	11	5	4	103
10	1000CSW150SS	13 3/8	5 3/4	5 7/16	143
12	1200CSW150SS	16 1/8	7 1/8	5 7/8	252



Ordering Information

Example: Include full description

Size Model
(Prefix) #

0400 - CSW150SSMIR

4", 316SS Wafer Swing Check Valve,
Metal Seat, 316SS Disc

Notes

Manufacturer reserves the right to modify dimensions, materials, or design. Contact factory for certification.

Valves are designed to operate on vertical and horizontal flow, see note 1.

NOTE 1

The wafer check valve is designed for installation between two pipe flanges in horizontal or vertical pipelines (in the latter case upward flow is preferred).

*Please specify metal or viton seal.

